

ABOUT US

Since 1974, Chemicals & Machinery have been providing our clients with great solutions to meet their business goals. Our wide range of specialty chemical products coupled with our reliable plating and engineering machinery will equip you with the finest tools to enable you to surpass your expectations. But what makes us an attractive choice? Our high service standards give you the peace of mind to ensure that your technical and logistics support never falters.

WE SPECIALIZE

CLEANING TECHNOLOGIES

A crucial step that always goes unnoticed, proper cleaning is key to achieving your desired surface treatment results!

Our deep collaboration with NGL Cleaning Technologies SA gives you an edge in your precision cleaning and waste water treatment. We provide an excellent range of high performance, water-based solutions that are catered for aerospace applications.

ADVANTAGES include:

- Health & Safety
- Environmental Protection
- RoHS & REACH Compliance
- Superior Hydrophilic Surface for Surface Preparation
- Waste-water treatment to remove Organic & Inorganic pigments and highly toxic compounds

SURFACE FINISHING

As a leading supplier in the area of surface treatment and finishing, we carry a wide range of specialty chemicals covering areas of Pre-Treatment, Plating and the Post-Treatment. Almost all types of plating process chemistries are available. These **PROCESSES** include:

- Anodizing
- Electroless Nickel
- Precious Metal Plating
- Cadmium Plating
- Aluminum & Zinc Chromating

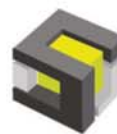
As expected, our products are RoHS and Mil-Spec compliant.

MACHINERY SOLUTIONS

Complementing our chemical solutions are our highly cost competitive and effective machineries. We provide **MACHINERIES** for the following areas of production:

- Vibratory polishing processes (Buffing, Burnishing, Descaling, Grinding)
- Manual buffing processes
- Fabrication of Plating tanks and piping solutions
- Plating related equipment (Rectifiers, Filter Pumps & Cartridges)

WE DISTRIBUTE



STELLA
Specialty Chemicals

